



# COVID-19 Weekly Surveillance Report

## Table of Contents

<b>Summary for the week 03 July to 09 July 2023 (inclusive)</b> .....	<b>2</b>
<b>Case data</b> .....	<b>3</b>
Figure 1. COVID-19 cases by notification week and test type, Western Australia, 03 January 2022 to 09 July 2023.....	3
Figure 2. COVID-19 cases by age group and sex, Western Australia, 03 July to 09 July 2023.....	4
Table 1. COVID-19 reinfections, Western Australia, 02 March 2022 to 09 July 2023.....	5
Figure 3. 7-day moving average of COVID-19 cases per 100,000 population by Australian jurisdiction, 01 December 2021 to 04 July 2023.....	6
Figure 4. 7-day moving average of COVID-19 age-specific rates per 100,000 population, Western Australia, 06 February 2022 to 09 July 2023. ....	6
Figure 5. 7-day moving average of COVID-19 case rates per 100,000 population by health region of residence, Western Australia, 06 February 2022 to 09 July 2023. ....	7
Table 2. Number of COVID-19 cases and rates per 100,000 population by reporting week and health region of residence, Western Australia. ....	8
Figure 6 (a). Locally acquired COVID-19 weekly case rates per 100,000 population by Local Government Area, Western Australia, 03 July to 09 July 2023.....	9
(b) Locally acquired COVID-19 weekly case rates per 100,000 population by Local Government Area, Perth metropolitan area, 03 July to 09 July 2023. ....	9
<b>Aboriginal case summary</b> .....	<b>10</b>
Figure 7. COVID-19 case rates per 100,000 population and rate ratio by Aboriginal status and notification week, Western Australia, 09 October 2022 to 09 July 2023.....	10
<b>Hospitalisations, intensive care unit (ICU) inpatients and deaths</b> .....	<b>11</b>
Figure 8. 7-day average of COVID-19 cases currently in hospital or in ICU, 09 January 2022 to 09 July 2023. ....	11
Table 3. Number of COVID-19 related deaths by sex and age group, 03 July to 09 July 2023 and 01 January 2022 to 09 July 2023.....	12
<b>Testing data</b> .....	<b>13</b>
Figure 9. Number of COVID-19 polymerase chain reaction tests and positivity by laboratory category and week of specimen collection, 09 February 2020 to 09 July 2023. ....	13
<b>Appendix 1</b> .....	<b>14</b>
Number of regional cases by postcode, 03 July – 09 July 2023.....	14

## Summary for the week 03 July to 09 July 2023 (inclusive)

In the week of 03 July to 09 July 2023 there were:

- 1,089 COVID-19 cases reported
  - 235 diagnosed by polymerase chain reaction (PCR) tests
  - 854 diagnosed by rapid antigen tests (RAT)
- 376 were reinfections (see definition in Table 2)
- 27 new hospital admissions and 1 new admission into an intensive care unit
- 6 deaths, aged 78 - 95 years old
- 5,491 COVID-19 PCR tests conducted

### Surveillance summary

This week, **case numbers** decreased by 17% compared to the previous week. Cases diagnosed by PCR decreased by 9% and by RAT decreased by 19%. **Reinfections** comprised 35% of total cases this week, compared with 34% last week.

The number of **PCR tests** conducted increased by 4% compared to the previous week, with a 7-day average positivity rate of 4.9%.

The moving seven-day average **case rate** per 100,000 population decreased in most regions except in the Kimberley and Wheatbelt regions, which increased. The seven-day average case rate for the Perth metropolitan area (6 cases/100,000 population) is slightly higher than the non-metropolitan regions combined (5 cases/100,000 population).

The seven-day average **age-specific rate** decreased in most age groups, except the 20 – 29 year age group, which remained steady, and the 70+ age group, which increased. The highest rates were in the 70+ age group (10 cases/100,000 population), and the lowest rates in the 0 - 9 years age group (3 cases/100,000 population).

The 7-day average of **hospitalised cases** decreased by 16% from 141 last week to 119 this week, and **intensive care unit cases** decreased from 3 last week to 1 this week. **New hospital admissions** related to COVID-19 increased by 13% from 24 last week to 27 this week, and **direct intensive care unit admissions** increased from 0 last week to 1 this week.

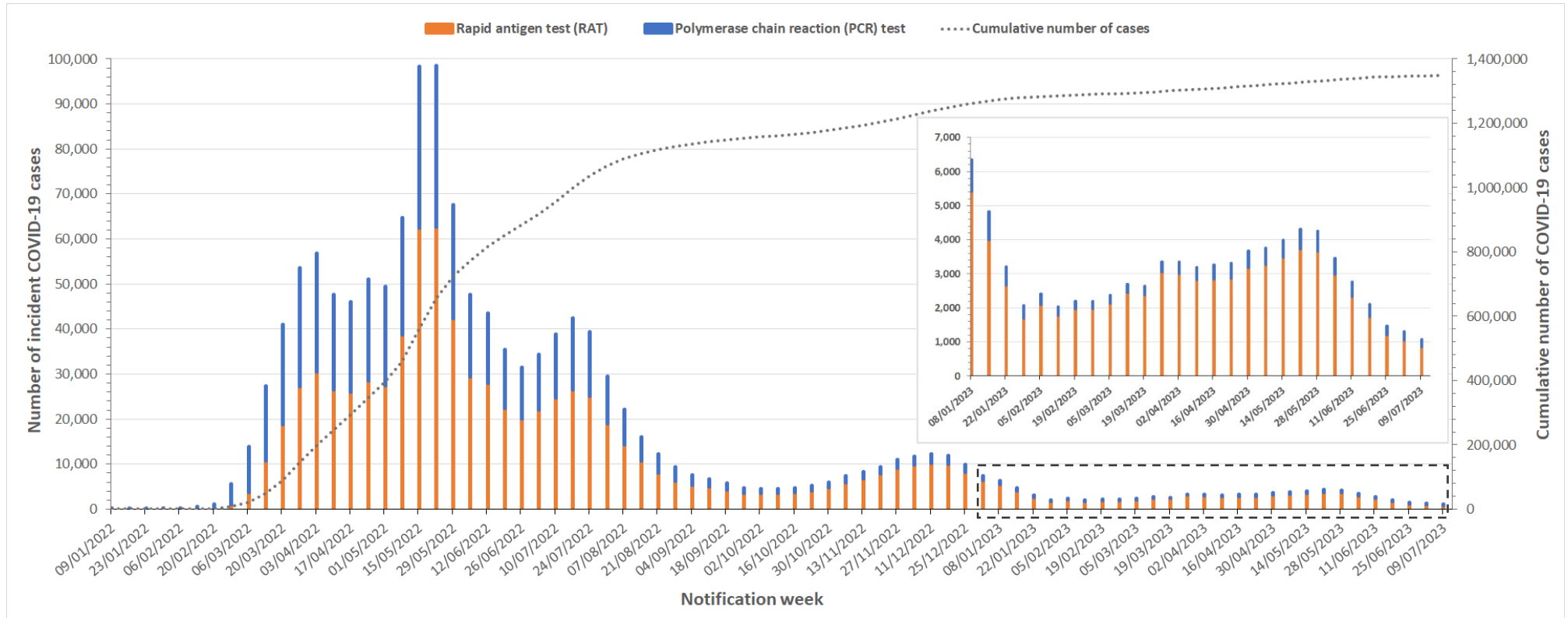
**Deaths** increased this week with 6 deaths reported compared to 2 last week.

This week, 33 cases were reported in the **Aboriginal population**, a 31% increase compared to last week. Case rates in the Aboriginal population are lower than the non-Aboriginal population, with a 7-day average rate ratio of 0.8 this reporting week. There were no deaths reported in the Aboriginal population this week.

**Nationally**, the moving seven-day average case rates decreased in all jurisdictions. Tasmania reported the highest rate (11 cases/100,000 population) and Victoria the lowest rate (2 cases/100,000 population). The rate in Western Australia was 6 cases/100,000 population.

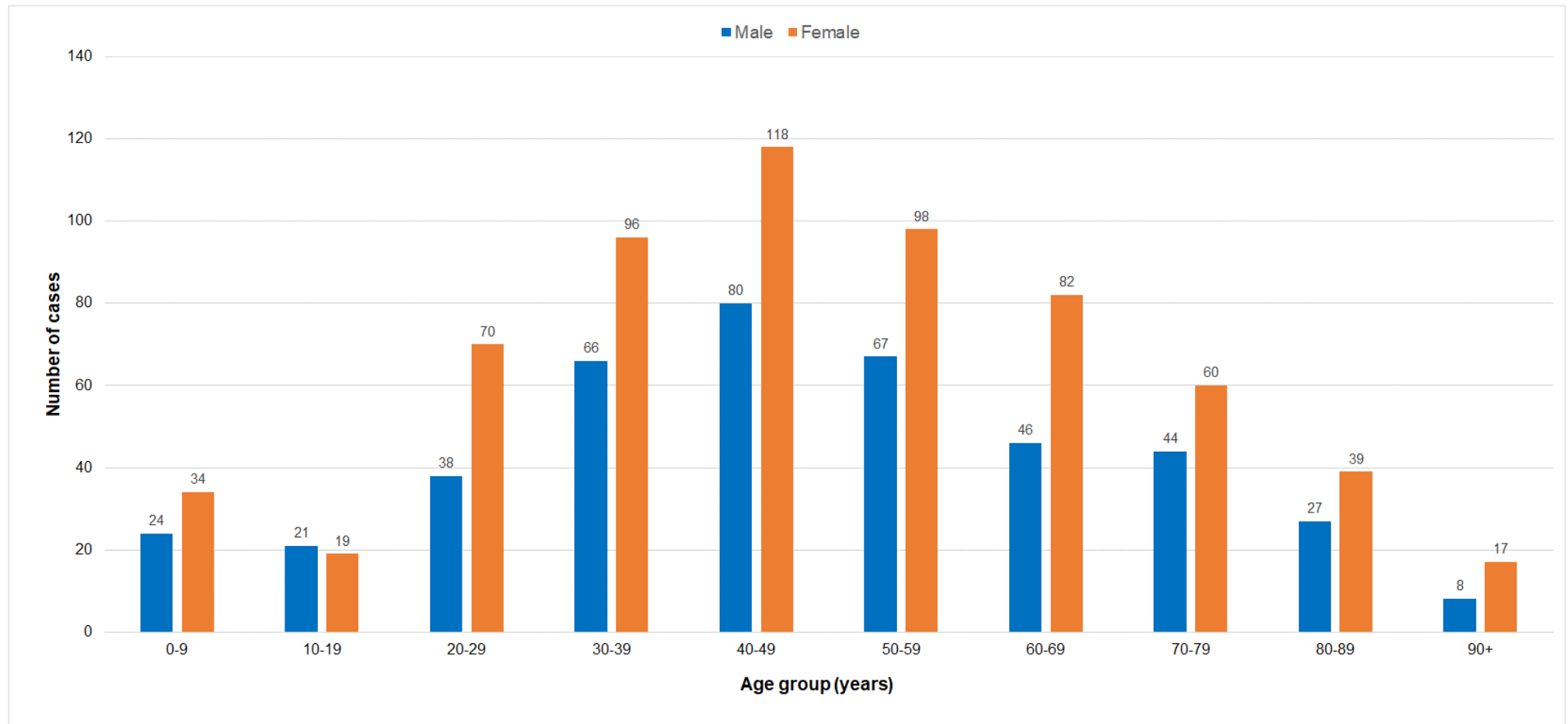
# Case data

Figure 1. COVID-19 cases by notification week and test type, Western Australia, 03 January 2022 to 09 July 2023.



**Notes**  
 Data sourced from Western Australia Department of Health dataset  
 Following the resumption of large passenger cruise vessels entering WA waters on 24<sup>th</sup> October 2022, the daily and weekly number of COVID-19 notifications may intermittently be distorted by inclusion of vessel outbreak cases in WA data, irrespective of the place of residence of the cases  
 Notification week refers to data reported over the 7 days Monday to Sunday.

**Figure 2. COVID-19 cases by age group and sex, Western Australia, 03 July to 09 July 2023.**



**Notes**  
 Data sourced from Western Australia Department of Health dataset  
 Following the resumption of large passenger cruise vessels entering WA waters on 24<sup>th</sup> October 2022, the daily and weekly number of COVID-19 notifications may intermittently be distorted by inclusion of vessel outbreak cases in WA data, irrespective of the place of residence of the cases  
 Higher case numbers in females relative to males, particularly in those aged 20-69 years, are likely due to increased propensity of women to seek and undertake testing, whether by RAT or PCR, rather than true differences in the incidence of infection  
 Sex data is partially incomplete due to the unavailability of this variable during rapid antigen test registration, resulting in a discrepancy to total case numbers reported for the week.

- Males: n=421 (39.9%) Females: n=633 (60.1%)
- Median age = 48 years; range: 0 to 100 years

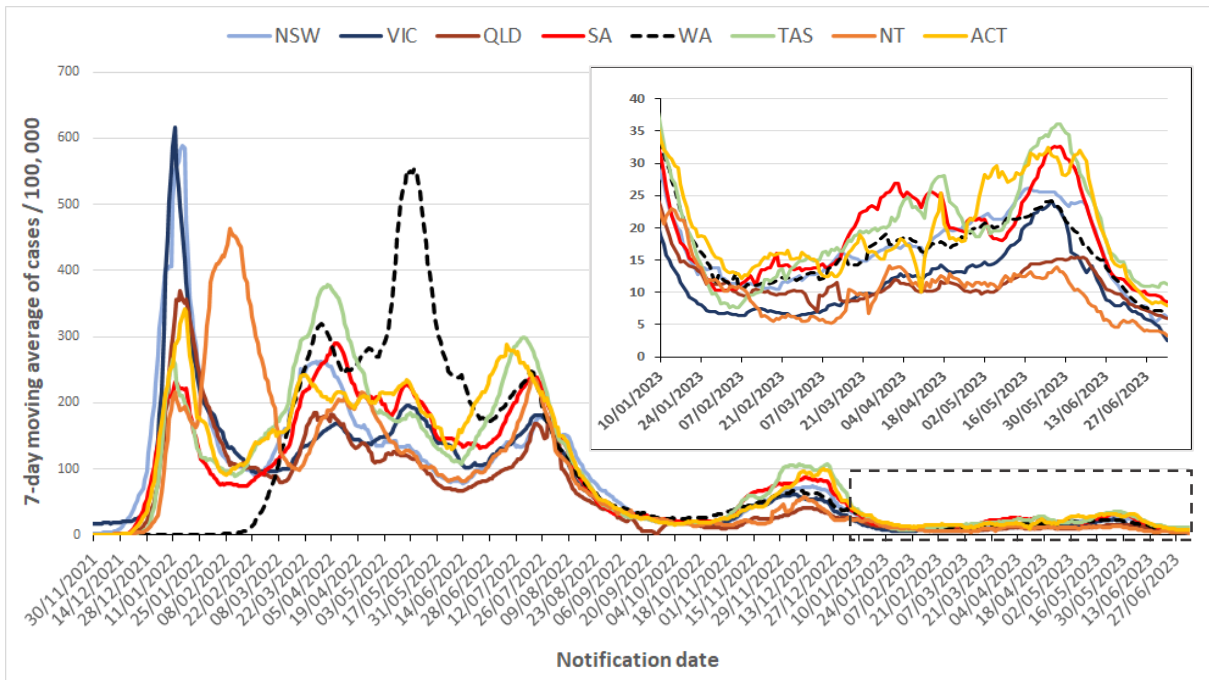
**Table 1. COVID-19 reinfections, Western Australia, 02 March 2022 to 09 July 2023.**

<b>Month</b>	<b>Number of reinfections *</b>
Mar-2022	14
Apr-2022	30
May-2022	122
Jun-2022	886
Jul-2022	5,095
Aug-2022	5,757
Sep-2022	4,064
Oct-2022	3,005
Nov-2022	7,153
Dec-2022	11,251
Jan-2023	5,527
Feb-2023	3,604
Mar-2023	5,042
Apr-2023	5,553
May-2023	7,531
June-2023	3,486
<b>July-2023^</b>	<b>467</b>
<b>Total</b>	<b>68,587</b>

\* Reinfection definition: between 2<sup>nd</sup> March 2022 and 8<sup>th</sup> July 2022, COVID-19 reinfections were defined as a positive COVID-19 test that occurred more than 12 weeks after an initial infection. From 9 July 2022 to 13 October 2022, COVID-19 reinfections were defined as a positive COVID-19 test occurring 28 days after previously recovering from the virus. From 14 October 2022 to date, COVID-19 reinfections are defined as a positive COVID-19 test occurring 35 days after the date of positive test for the most recent infection. Sourced from [Series of National Guidelines \(SoNG\)](#)

^ Data up to 09<sup>th</sup> July 2023 inclusive

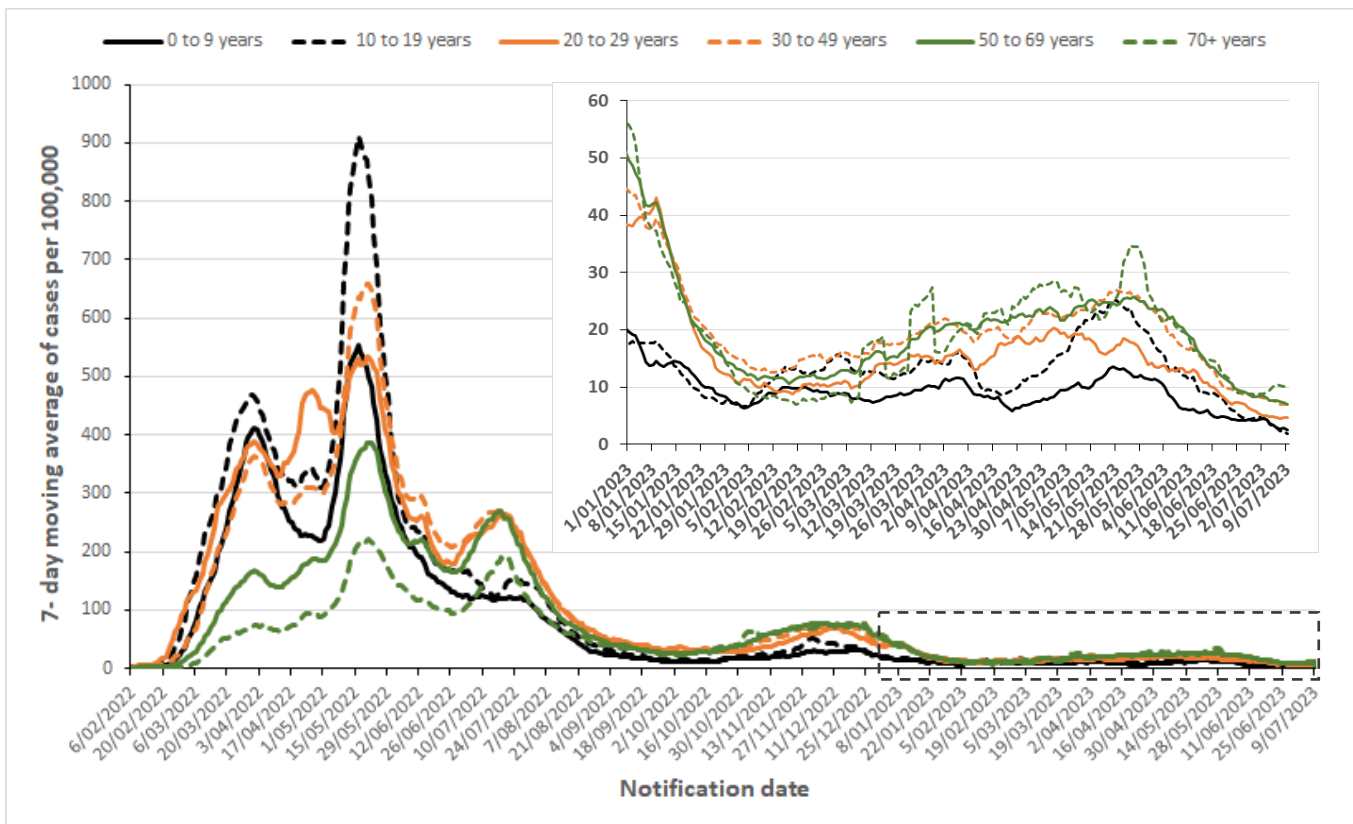
**Figure 3. 7-day moving average of COVID-19 cases per 100,000 population by Australian jurisdiction, 01 December 2021 to 04 July 2023.**



**Notes**

Data sourced from the jurisdictional health department datasets  
 Notification date refers to the date that a case is notified to the relevant jurisdictional health department  
 Data is only available up to and including Tuesday of current report week for all jurisdictions except Western Australia  
 From 01 July 2023, Victoria ceased reporting COVID-19 cases determined by Rapid Antigen Tests  
 Population denominators are sourced from Australian Bureau of Statistics December 2020 estimates.

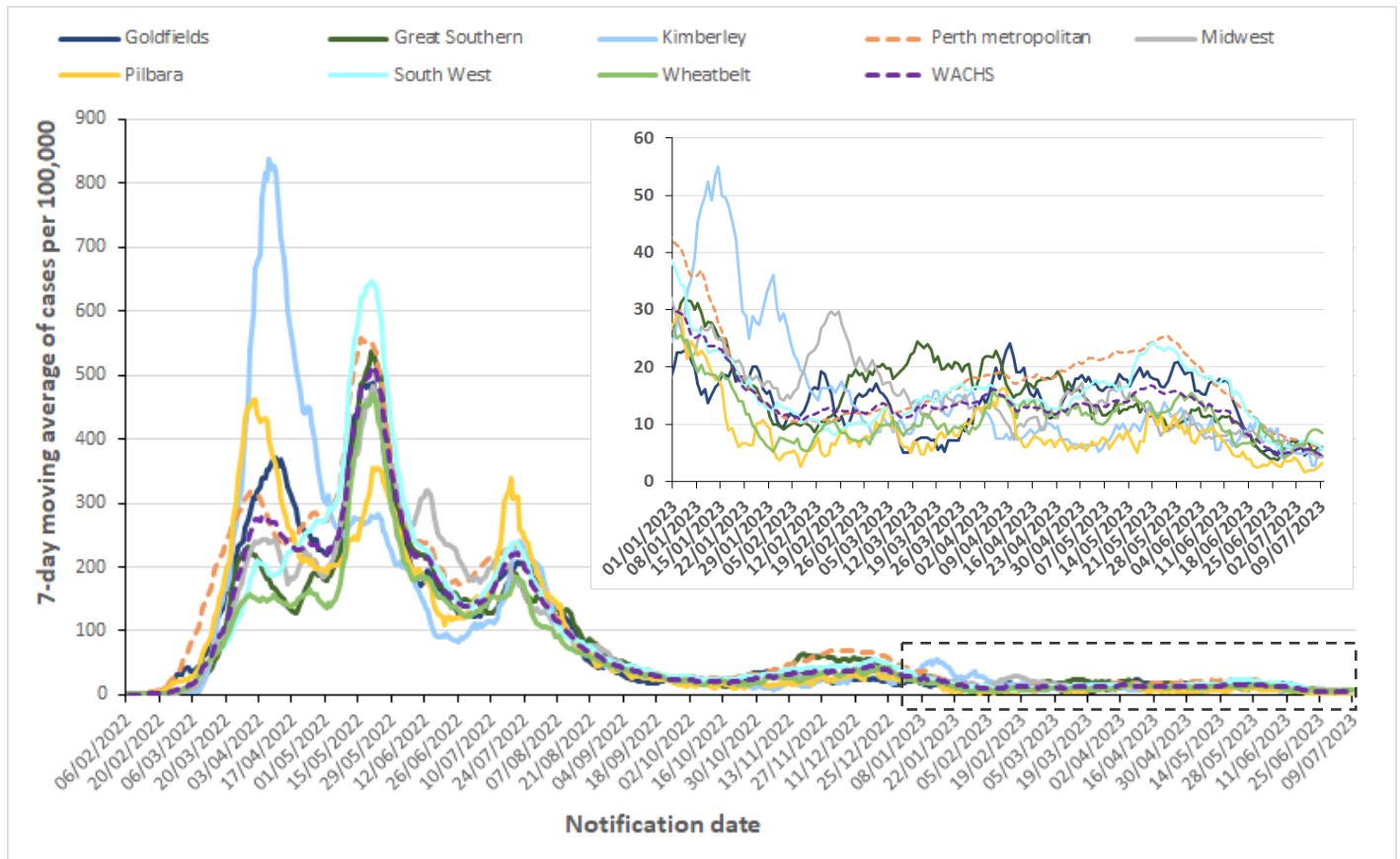
**Figure 4. 7-day moving average of COVID-19 age-specific rates per 100,000 population, Western Australia, 06 February 2022 to 09 July 2023.**



**Notes**

Data sourced from Western Australia Department of Health dataset  
 Notification date refers to the date that a case is notified to Western Australia Department of Health  
 Following the resumption of large passenger cruise vessels entering WA waters on 24<sup>th</sup> October 2022, the daily and weekly number of COVID-19 notifications may intermittently be distorted by inclusion of vessel outbreak cases in WA data, irrespective of the place of residence of the cases  
 Population denominator sourced from Australian Bureau of Statistics June 2021 estimates.

**Figure 5. 7-day moving average of COVID-19 case rates per 100,000 population by health region of residence, Western Australia, 06 February 2022 to 09 July 2023.**



**Notes**  
 Data sourced from Western Australia Department of Health dataset  
 Notification date refers to the date that a case is notified to Western Australia Department of Health  
 Western Australia Country Health Service (WACHS) region includes all non-metropolitan health regions: Central-Wheatbelt, Goldfields, Great Southern, Kimberley, Midwest, Pilbara and South West  
 Perth metropolitan region includes East Metropolitan Health Service, North Metropolitan Health Service and South Metropolitan Health Service  
 Population denominator sourced from Australian Bureau of Statistics 2020 estimates.

**Table 2. Number of COVID-19 cases and rates per 100,000 population by reporting week and health region of residence, Western Australia.**

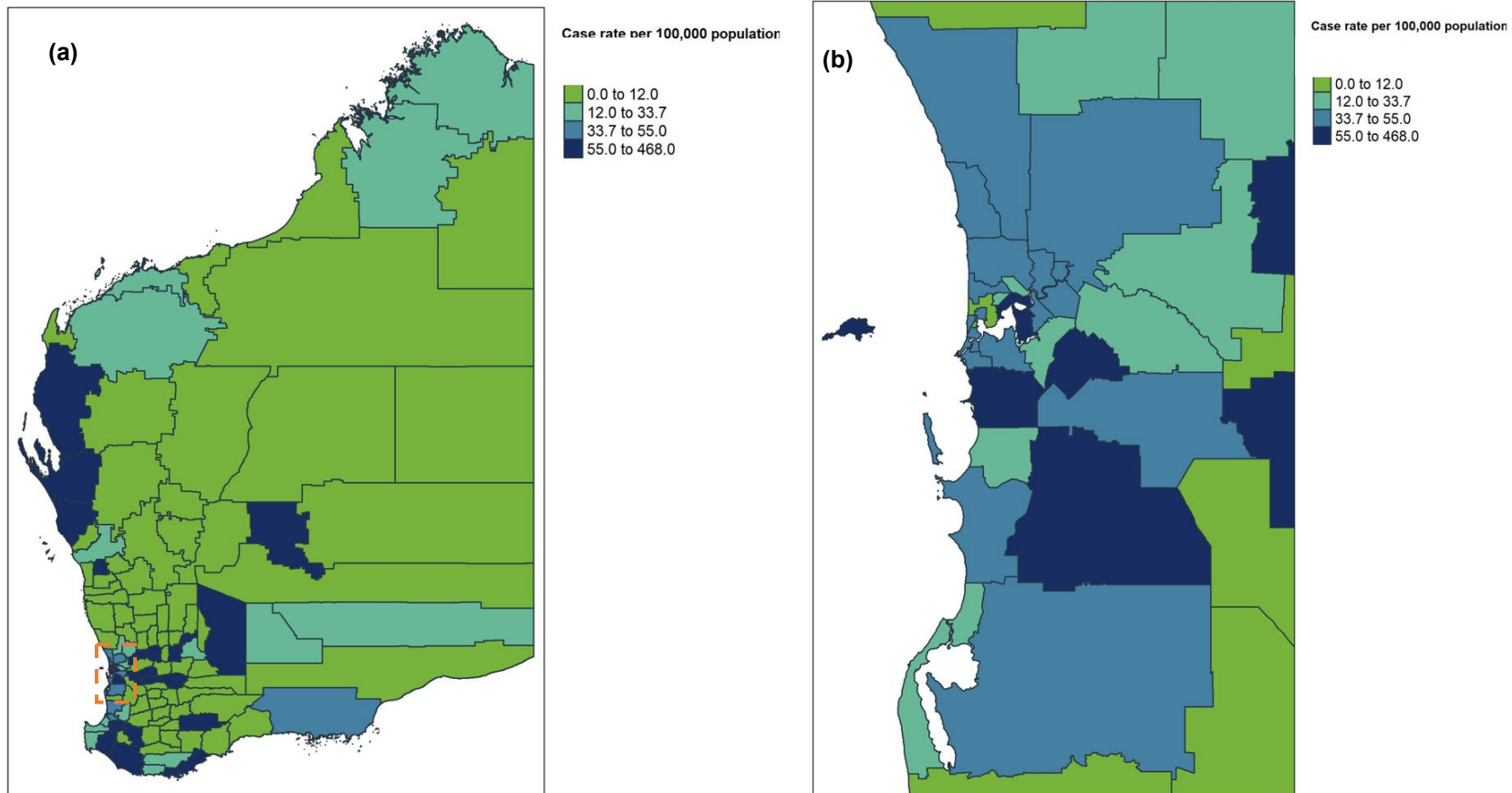
Health Region		Current report week		Previous report week	
		Week 03 July to 09 July		Week 26 June to 02 July	
		Number	Rate <sup>^</sup>	Number	Rate <sup>^</sup>
<b>Perth metropolitan region</b>		<b>906</b>	<b>43</b>	<b>1,094</b>	<b>51</b>
<b>WACHS Regions</b>		<b>172</b>	<b>32</b>	<b>212</b>	<b>40</b>
	<b>Goldfields</b>	12	22	19	35
	<b>Great Southern</b>	26	42	29	47
	<b>Kimberley</b>	2	6	7	19
	<b>Midwest</b>	16	26	27	44
	<b>Pilbara</b>	6	10	11	18
	<b>South West</b>	71	39	84	46
	<b>Wheatbelt</b>	39	51	35	46
<b>Other*</b>		<b>11</b>	-	<b>10</b>	-
<b>Total</b>		<b>1,089</b>	<b>40</b>	<b>1,316</b>	<b>49</b>

**Notes**  
 Data sourced from Western Australia Department of Health dataset  
 Notification date refers to the date that a case is notified to Western Australia Department of Health  
 Western Australia Country Health Service (WACHS) region includes all the non-metropolitan regions: Central-Wheatbelt, Goldfields, Great Southern, Kimberley, Midwest, Pilbara and South West  
 Perth Metropolitan region includes East Metropolitan Health Service, North Metropolitan Health Service and South Metropolitan Health Service  
 \* Other includes cases with overseas and interstate residential addresses, and cases without residential address information  
 ^ Rate reported as cases per 100,000 population. The total rate excludes "Other" cases, as there is no denominator population representing this group.  
 Following the resumption of large passenger cruise vessels entering WA waters on 24<sup>th</sup> October 2022, the daily and weekly number of COVID-19 notifications may intermittently be distorted by inclusion of vessel outbreak cases in WA data, irrespective of the place of residence of the cases  
 Population denominator is sourced from Australian Bureau of Statistics 2020 estimates.



Figure 6 (a). Locally acquired COVID-19 weekly case rates per 100,000 population by Local Government Area, Western Australia, 03 July to 09 July 2023.

(b) Locally acquired COVID-19 weekly case rates per 100,000 population by Local Government Area, Perth metropolitan area, 03 July to 09 July 2023.



**Notes**

Data sourced from Western Australia Department of Health dataset

Notification date refers to the date that a case is notified to Western Australia Department of Health

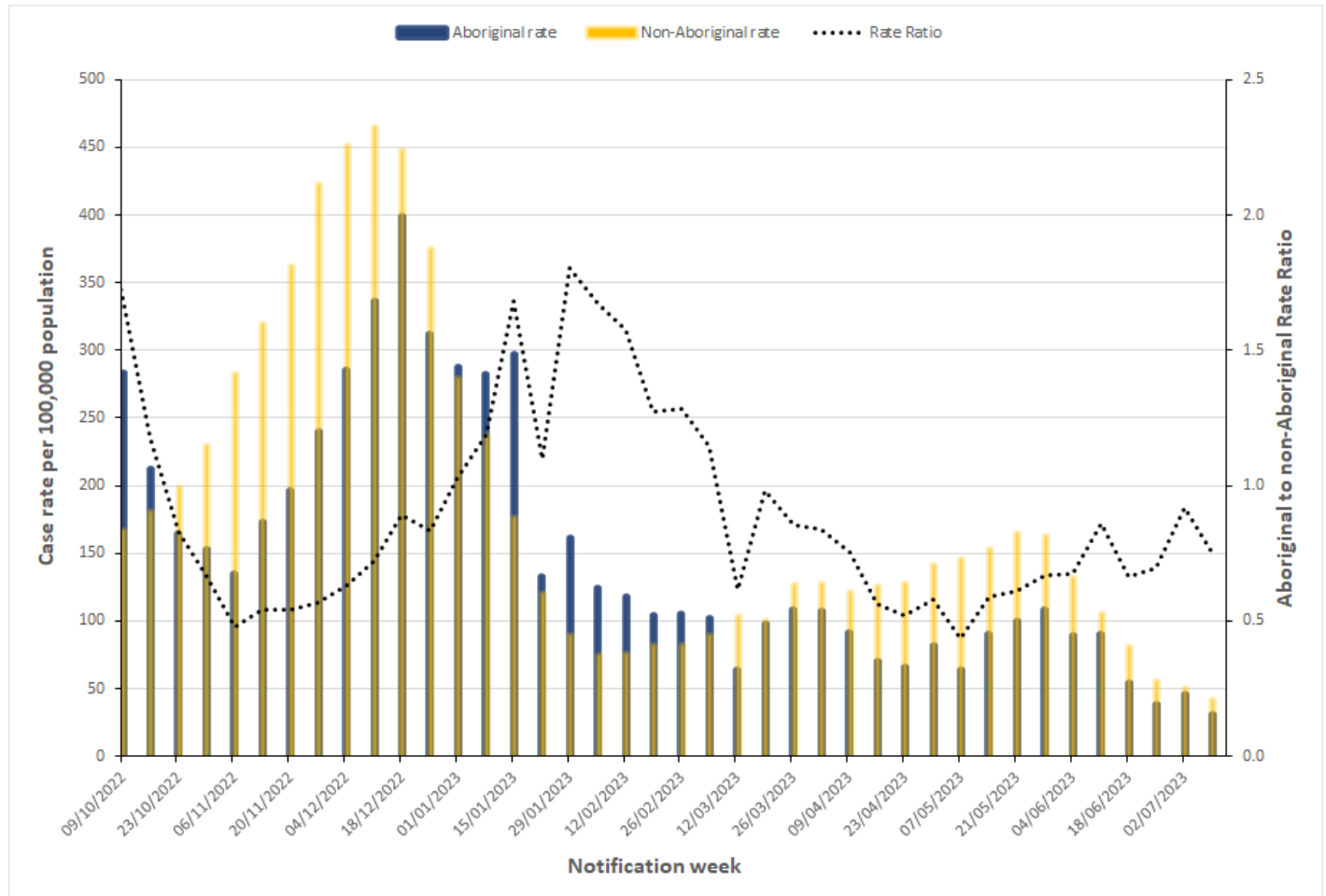
Areas on the map are defined by Local Government Area (LGA) boundaries

Cases are represented on the map according to their place of usual residence in an LGA (no information for specific location of acquisition)

Population denominator is sourced from Australian Bureau of Statistics 2020 estimates.

# Aboriginal case summary

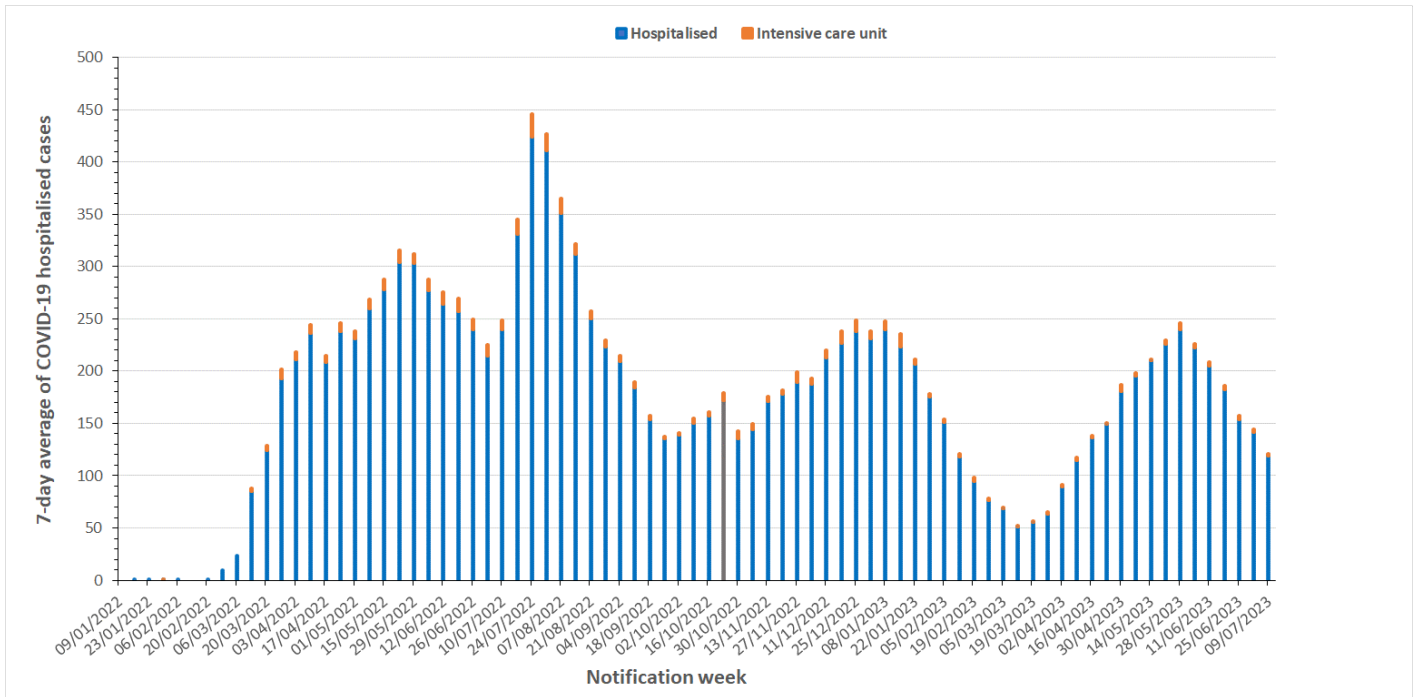
Figure 7. COVID-19 case rates per 100,000 population and rate ratio by Aboriginal status and notification week, Western Australia, 09 October 2022 to 09 July 2023.



**Notes**  
 Data sourced from Western Australia Department of Health dataset  
 Notification week refers to data reported over the 7 days Monday to Sunday  
 Aboriginal status is defined as those who identify as 'Aboriginal and Torres Strait Islander (TSI) origin'/'Aboriginal but not TSI origin'/'TSI but not Aboriginal origin'  
 Cases where Aboriginal status was not stated were designated as non-Aboriginal  
 Population denominator data were sourced from Australian Bureau of Statistics 2020 estimates  
 Rate ratio is calculated by dividing the Aboriginal rate by the non-Aboriginal rate, with a 7-day average of the respective rate ratios applied to smooth the trend

# Hospitalisations, intensive care unit (ICU) inpatients and deaths

Figure 8. 7-day average of COVID-19 cases currently in hospital or in ICU, 09 January 2022 to 09 July 2023.



**Notes**

Data sourced from Western Australia Department of Health dataset  
 Notification week refers to data reported over the 7 days Monday to Sunday  
 'Hospitalised' relates to active and cleared COVID-19 cases that are current hospital inpatients. The reason for admission may be unrelated to COVID-19 for some people  
 'Intensive care unit' (ICU) is a subset of hospitalised and relates to active/cleared COVID-19 cases that are currently in an ICU  
 The definition of COVID-19 related hospitalisation was updated on 21 October 2022 to exclude cases where more than 60 days have passed since their positive COVID-19 test. This new definition more accurately captures cases in whom COVID-19 may have contributed to their reason for ongoing hospitalisation. Data reported after 21 October cannot be compared directly to data recorded prior to that date.

**Table 3. Number of COVID-19 related deaths by sex and age group, 03 July to 09 July 2023 and 01 January 2022 to 09 July 2023.**

	<b>Current report week</b> Week 03 July – 09 July 2023	<b>Year 2022 to date</b> 1 Jan 2022 – 09 July 2023
<b>Sex</b>	<b>Deaths (n= 6)</b>	<b>Deaths (n= 1,108)</b>
<b>Female</b>	3 (50.0%)	543 (49.0%)
<b>Male</b>	3 (50.0%)	565 (51.0%)
<b>Unspecified</b>	0 (0%)	0 (0%)
<b>Age group (years)</b>		
<b>0-9</b>	0 (0%)	0 (0%)
<b>10-19</b>	0 (0%)	2 (0.2%)
<b>20-29</b>	0 (0%)	0 (0%)
<b>30-39</b>	0 (0%)	7 (0.6%)
<b>40-49</b>	0 (0%)	13 (1.2%)
<b>50-59</b>	0 (0%)	33 (3.0%)
<b>60-69</b>	0 (0%)	74 (6.7%)
<b>70-79</b>	3 (50.0%)	206 (18.6%)
<b>80-89</b>	2 (33.3%)	423 (38.2%)
<b>90+</b>	1 (16.7%)	350 (31.5%)

**Notes**

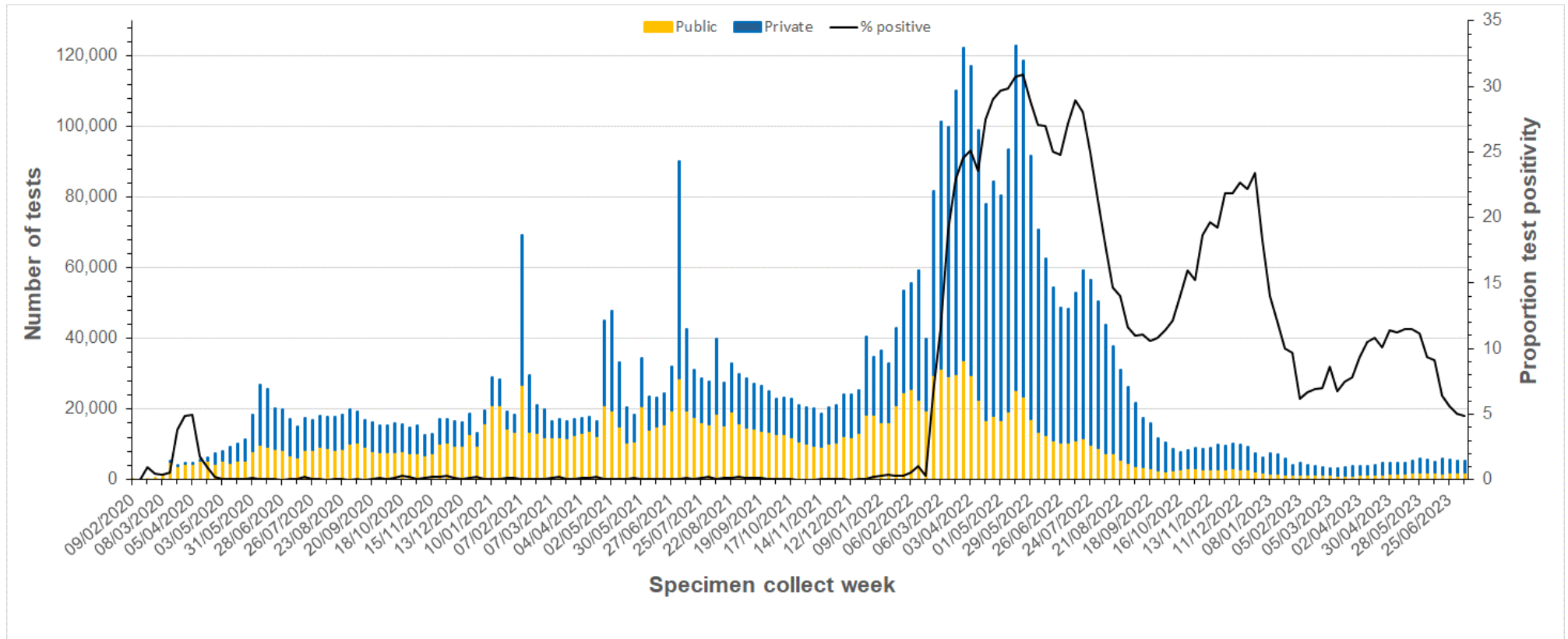
Data sourced from Western Australia Department of Health dataset

Deaths are counted by notification date and may include historical deaths that occurred (i.e. date of death) prior to the current report week

Deaths are not necessarily associated with hospital and/or ICU admissions

## Testing data

Figure 9. Number of COVID-19 polymerase chain reaction tests and positivity by laboratory category and week of specimen collection, 09 February 2020 to 09 July 2023.



### Notes

Data sourced from Western Australian public and private pathology laboratories

Specimen collect week refers to specimens collected between Monday to Sunday

Number of tests includes both positive and negative tests

From 01 October 2022, testing at private pathology providers requires a referral from a GP

From 03 March 2023, Murdoch COVID-19 public PCR testing clinic closed. From this time forward public access to COVID-19 PCR testing is only via GP referral to private pathology providers.

# Appendix 1

## Number of regional cases by postcode, 03 July – 09 July 2023

WACHS Regions	Postcode	Week 03 July to 09 July 2023	WACHS Regions	Postcode	Week 03 July to 09 July 2023
Goldfields	6430	<5	South West (continued)	6275	<5
	6432	<5		6280	<5
	6437	<5		6281	<5
	6442	<5		6284	<5
	6450	5		6285	<5
Great Southern	6324	<5	Wheatbelt	6304	<5
	6330	22		6306	<5
	6333	<5		6375	<5
	6343	<5		6401	23
Kimberley	6728	<5		6405	<5
	6743	<5		6407	<5
Midwest	6522	<5		6410	<5
	6530	5		6415	<5
	6532	<5		6426	<5
	6535	<5		6490	<5
	6537	<5		6502	<5
	6701	<5		6562	<5
Pilbara	6714	<5		6564	<5
	6716	<5		6566	<5
	6718	<5			
	6751	<5			
	6754	<5			
South West	6225	<5			
	6230	13			
	6232	6			
	6233	17			
	6236	<5			
	6239	<5			
	6244	<5			
	6255	<5			
	6258	<5			
	6260	<5			
	6271	<5			

### Notes

Data sourced from Western Australia Department of Health dataset

Exact number of cases less than 5 not reported for confidentiality

Notification date refers to the date in which a case is notified to Western Australia Department of Health

Case data is based on the residential postcode of each case

Western Australia Country Health Service (WACHS) includes Goldfields, Great Southern, Kimberley, Midwest, Pilbara, South West and Wheatbelt public health regions

**This document can be made available in alternative formats on request for a person with disability.**

© Department of Health 2023

Copyright to this material is vested in the State of Western Australia unless otherwise indicated. Apart from any fair dealing for the purposes of private study, research, criticism or review, as permitted under the provisions of the *Copyright Act 1968*, no part may be reproduced or re-used for any purposes whatsoever without written permission of the State of Western Australia.

[health.wa.gov.au](https://health.wa.gov.au)