



Western Australian Aboriginal Immunisation Schedule



Childhood

Age/Eligibility	Antigen/Antibody	Brand(s)	Important information
Birth to <7 days	Nirsevimab*	Beyfortus®	Can be given up to 8 months of age, but preferably as close to birth as possible, if the mother did not receive Abrysvo > 2 weeks prior to birth. See RSV table and links below for further information.
	Hepatitis B	H-B-Vax® II Paed or Engerix®B Paed	
6–8 weeks	DTPa-hepB-IPV-Hib	Infanrix® hexa or Vaxelis®	
	13vPCV	Prevenar® 13	
	Rotavirus	Rotarix®	Oral dose 1: Must be given by 14 weeks of age
	MenACWY*	Nimenrix®	
	MenB	Bexsero®	Prophylactic paracetamol recommended
4 months	DTPa-hepB-IPV-Hib	Infanrix® hexa or Vaxelis®	
	13vPCV	Prevenar® 13	
	Rotavirus	Rotarix®	Oral dose 2: Must be given by 24 weeks of age
	MenACWY*	Nimenrix®	
	MenB	Bexsero®	Prophylactic paracetamol recommended
6 months	DTPa-hepB-IPV-Hib	Infanrix® hexa or Vaxelis®	
	13vPCV	Prevenar® 13	
MRC	MenB	Bexsero®	Prophylactic paracetamol recommended
	MenACWY	Nimenrix®	
12 months	MMR	MMRII® or Priorix®	
	13vPCV	Prevenar® 13	
	MenACWY	Nimenrix®	
	MenB	Bexsero®	Prophylactic paracetamol recommended
MRC	Hepatitis B	H-B-Vax® II Paed or Engerix® B Paed	<32 weeks gestation or <2000g birth weight
All children >12 months with MRC	Children diagnosed with MRC at >12 months of age require 1 dose of 13vPCV at diagnosis, followed by a first dose of 23vPPV, 2 to 12 months later or at 4 years of age, whichever is later. A second dose of 23vPPV is given 5 years later. See Australian Immunisation Handbook		
18 months	DTPa	Infanrix® or Tripacel®	
	Hib	ActHIB®	
	MMRV	Priorix-Tetra®	Do not administer MMRV as dose 1 of a measles-containing vaccine if <4 years of age
	Hepatitis A	Vaqta® Paed/Adol	
<2 years	Catch-up for MenB is available for Aboriginal children <2 years of age		
4 years	DTPa-IPV	Quadracel® or Infanrix®IPV	
	Hepatitis A	Vaqta® Paed/Adol	Not required if previously received 2 doses (first dose at age ≥12 months) at least 6 months apart
	23vPPV	Pneumovax23®	First dose (if not previously received) followed by second dose at least 5 years later

See footnotes at bottom of page 3

Respiratory Syncytial Virus (RSV)

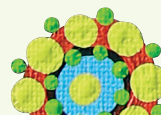
Age/Eligibility	Antigen/Antibody	Brand	Important information
See here for WA state-wide eligibility, excluding Kimberley/Pilbara regions.	Nirsevimab*	Beyfortus®	The RSV Immunisation decision aid contains information on both Abrysvo for patients currently pregnant, and Beyfortus for children under 2 years of age.
See here for Kimberley and Pilbara regions eligibility only.	Nirsevimab*	Beyfortus®	

Adolescent and adult

Age/Eligibility	Antigen	Vaccine brand(s)	Important information
All adolescents and adults with MRC	Adolescents and adults diagnosed with MRC require 1 dose of 13vPCV at diagnosis, followed by a first dose of 23vPPV, 2 to 12 months later. A second dose is given at least 5 years later. People of all ages with specified MRC are eligible for MenACWY, MenB and Hib vaccines.		
Year 7	HPV	Gardasil®9	Catch-up for adolescents <26 years of age
	dTpa	Boostrix® or Adacel®	
Year 10	MenACWY	Nimenrix® or MenQuadfi	
≥18 years	MRC Herpes-zoster	Shingrix®	2 doses, given 1–2 months apart
Pregnant	dTpa	Boostrix® or Adacel®	Each pregnancy, ideally between 20–32 weeks
	RSV	Abrysvo®	Eligible women between 28 - 36 weeks
≥20 years	Hepatitis B	Engerix® B	For non-immune persons. See the Australian Immunisation Handbook for recommendations and timing of doses
≥50 years	13vPCV	Prevenar® 13	See the Australian Immunisation Handbook for timing of doses
	23vPPV	Pneumovax23®	
	Herpes-zoster	Shingrix®	2 doses, given 2–6 months apart
Born after 1965*	MMR	Priorix®	Give 1 or 2 doses as required. Whilst serology is not routinely recommended, see WA adult measles vaccination program for details.

2025 Seasonal influenza

Age/Eligibility	Vaccine brand(s)	Important information
6 months to <5 years	Vaxigrip®Tetra, FluQuadri®	For children <9 years, or persons following a stem cell or solid organ transplant, 2 doses are required 1 month apart in the first year they receive influenza vaccine. One dose annually in subsequent years. For information on influenza dosing see the Australian Immunisation Handbook or annual ATAGI advice on seasonal influenza vaccines.
5 years to <65 years	Flucelvax®Quad, Vaxigrip®Tetra	
Pregnancy	Vaxigrip®Tetra, Flucelvax®Quad	Each pregnancy, any trimester
≥65 years	Fluad® Quad	Preferentially use adjuvanted QIV
WA Health staff ^{^*}	Flucelvax®Quad, FluQuadri®, Fluad® Quad	For ≥65 years use Fluad® Quad



Using the term Aboriginal

Within Western Australia, the term Aboriginal is used in preference to Aboriginal and Torres Strait Islander, in recognition that Aboriginal people are the original inhabitants of Western Australia. Aboriginal and Torres Strait Islander may be referred to in the national context and Indigenous may be referred to in the international context. No disrespect is intended to our Torres Strait Islander colleagues and community.

References

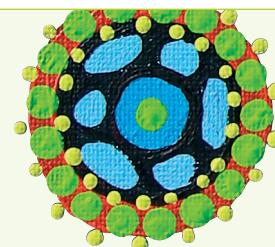
* Refers to WA State-funded Programs.

^ Refers to all persons attending WA Health staff influenza vaccination services.

MRC refers to people with medical risk conditions. Refer to the current online edition of The [Australian Immunisation Handbook](#) for all medical risk conditions, recommendations and timing of doses.

Persons aged <20 years can catch-up scheduled vaccines, refer to [Australian Immunisation Handbook](#) for timing of doses.

This document can be made available in alternative formats on request.



Produced by the Communicable Disease Control Directorate
© Department of Health 2025

Copyright to this material is vested in the State of Western Australia unless otherwise indicated. Apart from any fair dealing for the purposes of private study, research, criticism or review, as permitted under the provisions of the *Copyright Act 1968*, no part may be reproduced or re-used for any purposes whatsoever without written permission of the State of Western Australia.